



2.2

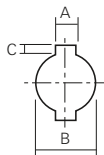
BRUSHES FOR
DEBURRING MACHINES

CT & CCA Brushes – High Density

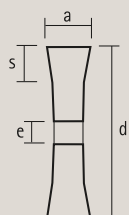
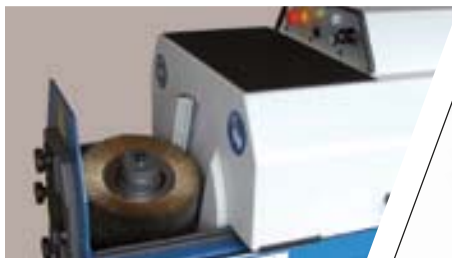
WIRE BRUSHES / BRUSHES FOR DEBURRING MACHINES



| Outside Diameter(d) | Rows | Face Width (a) | Trim Length (s) | BRUSH CT Monofilament wire | | | Stainless | | | BRUSH CCA Cable wire | | R.P.M. Max. |
|---------------------|------|----------------|-----------------|-------------------------------|-------|-------|-----------|-------|-------|-------------------------|-----------------------|----------------|
| | | | | Coated Steel | | | | | | Cable crimped CCA | Cable stainless steel | |
| 10" | 16 | 2-3/8" | 1-3/4" | 2516C | 2516E | 2516H | 2516N | 2516Z | 2516Q | 2616@ | 2616@Z | 3.600 |
| 10" | 28 | 3-3/8" | 1-3/4" | 2528C | 2528E | 2528H | 2528N | 2528Z | 2528Q | 2528@ | 2528@Z | 3.600 |
| 12" | 14 | 2-3/8" | 2" | 3014C | 3014E | 3014H | 3014N | 3014Z | 3014Q | 3014@ | 3014@Z | 3.000 |
| 12" | 25 | 3-3/8" | 2" | 3028C | 3028E | 3028H | 3028N | 3028Z | 3028Q | 3028@ | 3028@Z | 3.000 |



| INSIDE DIAMETER with keyways | | | | PLAIN INNER DIAMETER | |
|------------------------------|------------|------------|------|----------------------|------|
| Diameter (B) | Keyway (A) | Keyway (C) | Code | diameter (B) | Code |
| 2" | 1/2" | 9/32" | C51 | 1" | C26 |
| 2-3/32" | 1/2" | 1/4" | C53 | 4" | C100 |
| 2" | 1/2" | 1/4" | C55 | 4-11/32" | C110 |
| 3-1/8" | 1/2" | 9/32" | C80 | | |
| 3-1/4" | 1/2" | 1/4" | C82 | | |



order example:
CT 3014EC51
 1.Model: **CT**
 2.Code: **3014E**
 3.Arbor Hole: **C51**

Technical Specifications

- These brushes are typically used for deburring tube ends and profiles.
- These brushes are mainly characterized by its high density, quality and perfect balance.



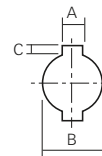
CUCB Roller Brushes

WIRE BRUSHES / BRUSHES FOR DEBURRING MACHINES

See
construction
drawing on
page 85

| Outside Diameter(d) | Face Width (a) | Trim Length (s) | Coated Steel .008" | _____ | Cable-Crimped Steel .020" | Stainless Steel .008" | _____ | Cable-Crimped Stainless Steel .020" | R.P.M. Max. |
|---------------------|----------------|-----------------|-----------------------|------------|---------------------------------|--------------------------|------------|---|----------------|
| 10" | 12" | 1-3/8" | CUCB92524C | CUCB92524H | CUCB92524@ | CUCB92524N | CUCB92524Q | CUCB92524@Z | 3,600 |
| 10" | 18" | 1-3/8" | CUCB92536C | CUCB92536H | CUCB92536@ | CUCB92536N | CUCB92536Q | CUCB92536@Z | 3,600 |
| 10" | 24" | 1-3/8" | CUCB92548C | CUCB92548H | CUCB92548@ | CUCB92548N | CUCB92548Q | CUCB92548@Z | 3,600 |
| 12" | 12" | 2-3/8" | CUCB93024C | CUCB93024H | CUCB93024@ | CUCB93024N | CUCB93024Q | CUCB93024@Z | 3,600 |
| 12" | 18" | 2-3/8" | CUCB93036C | CUCB93036H | CUCB93037@ | CUCB93036N | CUCB93036Q | CUCB93037@Z | 3,600 |
| 12" | 24" | 2-3/8" | CUCB93048C | CUCB93048H | CUCB93048@ | CUCB93048N | CUCB93048Q | CUCB93048@Z | 3,600 |

| Inside diameter type | C51 | C80 | C83 | C110 |
|----------------------|--------------|-------------------|------------------|----------|
| Keyway | 2"x1/2"x1/4" | 3-1/8"x 7/8"x1/4" | 3-1/4"x7/8"x1/4" | 4-11/32" |
| Plain | ØxAxB | ØxAxB | ØxAxB | Ø |

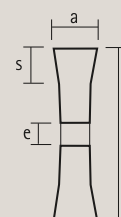
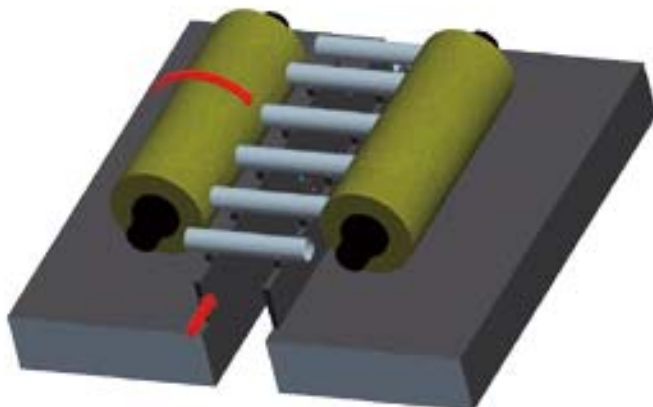


Technical Specifications

- Wire brushes manufactured in a block of high density and a perfect balance.
- The CUCB brushes suit the main deburring machines in the market.

Applications

- Deburring of tube and profiles cut ends.
- Mainly for automatic deburring machines ADIGE type-RSA-Pedrazzoli etc. Burmaster



order example:
CUCB 93037 @C80
 1.Model:**CUCB**
 2.Code:**93037 @**
 3.Inside diameter:**C80**